



**5 ONLY
starting in
the high
\$200's!!**

Ahoy...

from Mariner Estates on The Delta.

We are pleased to announce the release of Five (5) Single Family Townhomes where the buyers can dictate the purchase price.

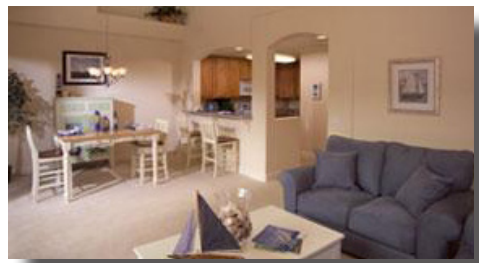
Yes, that is correct... These five homes are being offered as a part of a "Liquidation Sale".



With suggested prices starting in the High \$200's, we will accept and review offers on these homes from now through August 30th, 2009*. At that time we will notify the buyers and agents who have submitted the best offer on each home. And we will pay you a full 3% commission at the close of escrow.



It's all about the Delta Lifestyle at Mariner Estates! Each of these Single Family Townhomes, situated in a gated community, comes with a deep water boat dock. Whether your client is an avid wake boarder, water skier, or enjoys fishing or just cruising, the value and lifestyle opportunity can't be beat. These 3 & 4 bedroom homes offer up to approximately 2,100 square feet and each home has its own **personal elevator**. Designer finishes have been installed throughout and are included in the purchase price.



*Seller retains the right to accept or reject any offer(s)

**For more information please contact our sales representative Bernie Heyne.
Sales office is open Friday through Monday from 12 PM to 6 PM
or by appointment. 925-684-9172.**



Mariner Estates
 2601 Mariner Road • Oakley CA 94511
 www.bethelisland.net • 925 684 9172

